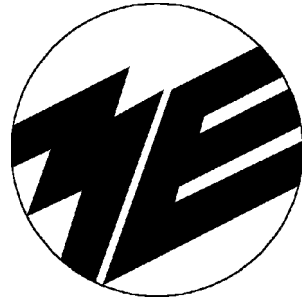
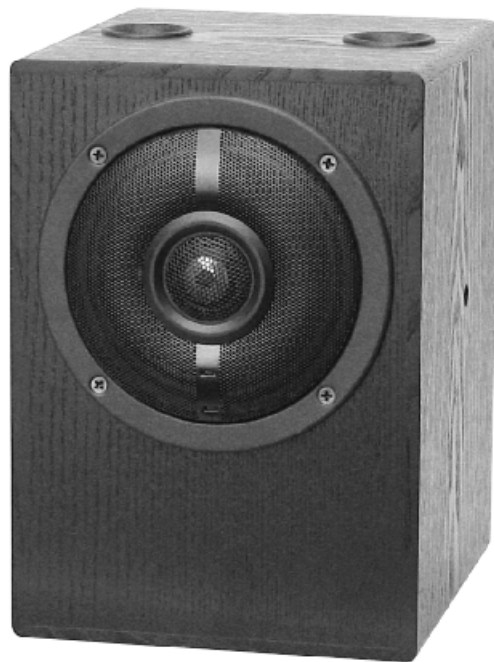


musikelectronic geithain



Studio  
Monitor Loudspeaker  
RL 906



# musikelectronic geithain



## The Reference Class - Active Studio-Monitors made by musikelectronic geithain

### **RL Series**

From a compact two-way monitor up to large loudspeaker-systems - we provide you with the best solutions for all kinds of professional use. The RL series' studio-monitors are the result of consequent development that needed many years and pursued only one aim: the highest degree of precise sound without any coloration regardless of genres. Hearing and measuring are the basis of our work. We build on profound musical comprehension and the knowledge of unalterable physical laws - not on magic tricks, new fashioned ideas nor marketing-strategies.

### **You have to do it you yourself!**

We produce loudspeaker in accordance to our conviction. That is why we develop and construct all monitors ourselves - from A to Z, from the electronics of the amplifier to the voice coil of the transducer. A product, which components all come from our own manufacturing, has noticeable advantages for you as a professional customer. We are independent of third parties products and build our components just the way we require them - this proceeding can't be beaten in quality by mass-production. This strategy also leads to high continuity and fixed values of our product range as well as it ensures that replacement parts will be available

for long-term. We believe that this is the only way to create a product which is worth your investment and satisfies your professional needs for many years.

### **Active and Coaxial**

Active multi-way technique with internal crossovers, power amplifier, and our special coaxial arranged transducers are the basis of all professional monitors of our RL series. As a result of this technology our speaker reveal a great depth and precise focus and low harmonic distortion. We used physiological effects of hearing to optimize the power concentration and directivity of sound. This degree of accuracy of sound is unmatched by any other.

### **Made from one piece**

All RL-loudspeaker from the compact RL 906 to the RL 900 A are tonal compatible with each other. Therefore it is your choice where you prefer to work; even within the same production you are independent from the studio environment. No matter if you work in a broadcast van or in a studio - the loudspeaker will not differ in sound, but only in their low-frequency cutoff and the maximum acoustic output.

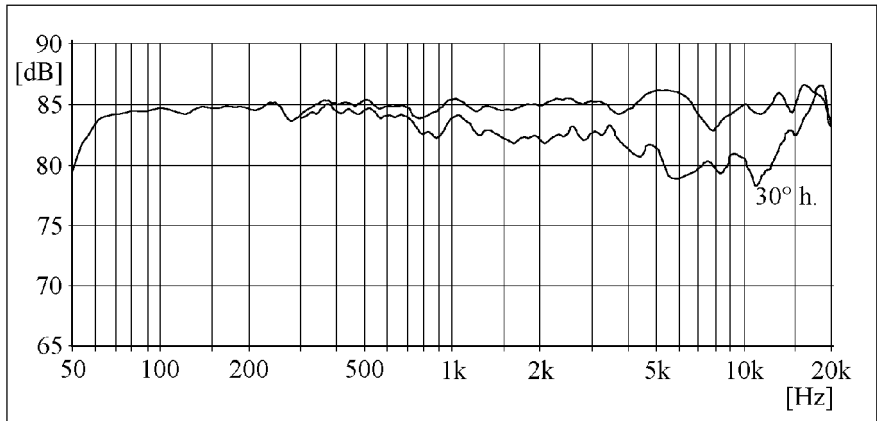
## Active Studio Monitor RL 906

The RL 906 is the most compact studio monitor of our RL series. Its dimensions suit it best for near-field purposes, for use in outside broadcast vans, as the main monitor for small audio- and video production studios, or for multi-channel audio use. Just like the other RL-speakers we choose our coaxial-technique to keep this active two-way monitor compatible in sound. We spend much effort to achieve a uniform sound throughout the whole RL series. This makes it possible to change from a mobile broadcast van to a stationary studio within one production. Also the acuity of focus and a minimum appearance of phantom-sound-sources makes the RL 906 comparable to its bigger brothers. We meticulously designed the directivity and power concentration of the speaker's sound in a way, that a frontal installation is possible. So the speaker don't need to be pointed towards the listener. This turns out to be an important

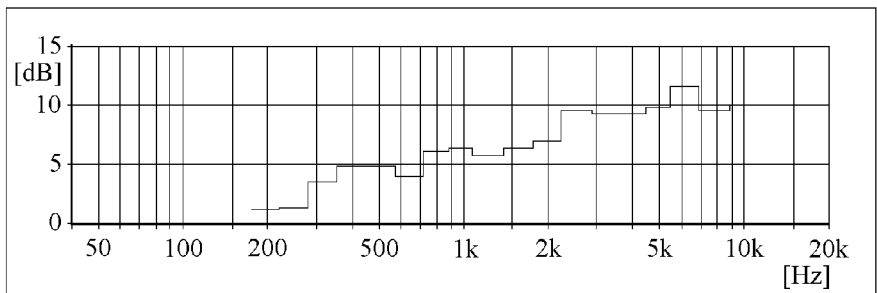
advantage in broadcast vans or for installation parallel to video screens. The loudspeaker is equipped with a 13 cm (5") cone woofer and a coaxial arranged 25 mm (1") tweeter. Each is powered by a separate MOSFET-amplifier with active crossover and electronic overload protection. The amplifier is situated in the back of the cabinet. The RL 906 provides a balanced XLR-type input with an adjustable input level. To compensate their placement, the speaker features three controllers to continuously adjust the high- and low-frequency response and also the frequencies around 300 Hz. These controllers are attached to the cabinet's backside. A two-colored LED indicates the state of the amplifier and warns of clipping. We optionally offer this speaker magnetically-shielded. There are also various stands available as optional extras, which fit in the speaker's integrated appliance.

## Specifications

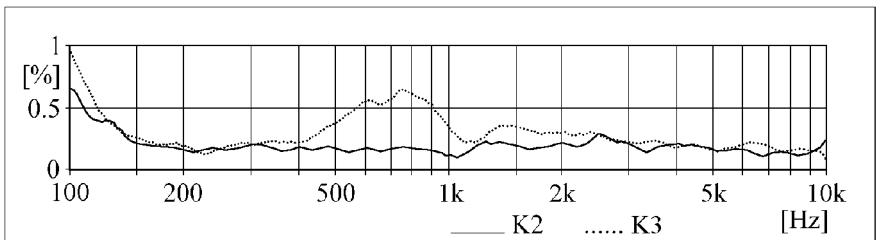
General	active two-way monitor for use in small audio-, video production studios, in mobile broadcast vans, and for multi-channel and near-field purposes
Maximum SPL	104 dB / r=1m
Bandwidth	50 Hz...20 kHz $\pm$ 3 dB
Calibration: Acoustic output level / $P_E = -14$ dBu	76 dB / r=1m
Directivity index from 200 Hz...10kHz	increasing from 1.5 to 11 dB
Inherent noise sound level	< 7dB / r=1m
Total harmonic distortion / measured at 83 dB, r=1m, from 150 Hz...10 kHz	< -40 dB
Nominal input level	+6 dBu adjustable
Input impedance	> 10 kOhm / symmetrically
Nominal output power of the MOSFET-amplifier LF HF	80 Watt / 4 Ohm 40 Watt / 8 Ohm
Electronic crossover frequencies	3 kHz
Operation and clipping indicator	LED on front side
Input connector	XLR 3F
Loudspeaker systems Woofer Tweeter	130 mm cone 25 mm dome
Temperature requirements for use for storage Humidity	+15°C to +35°C -25°C to +45°C 45 - 75 %
Power requirements	Europe 230 Volt ( $\pm$ 10%), AC, 50 Hz U.S.A. & Canada 120 Volt, AC, 60 Hz
Power consumption	max. 100 Watt at full load
Dimensions (H x W x D)	255 x 180 x 200 [mm]
Weight	5.5 kg
Design of the Cabinet	MDF wood, black veneer, different colors optional
Magnetic shield	optional



Free field frequency response



Directivity index



Total harmonic distortion  $P_A = 83$  dB



## musikelectronic geithain gmbh

studio techniques - sound reinforcement systems

Nikolaistrasse 7

Tel: (+49) 34341 3110

04643 Geithain

Fax: (+49) 34341 31144

Germany

e-mail: [info@me-geithain.de](mailto:info@me-geithain.de)